

MAP LEGEND

- Easier Singletrack Trail
- More Difficult Single Track Trail
- Most Difficult Single Track Trail
- Expert Single Track Trail
- Double Track Trail
- Proposed Velomont Route
- Proposed Trail
- Pumptrack
- Viewpoint
- MTB DH Suggested Direction
- Parking
- Bike Shop

Ridgeline Outdoor Collective greatly values its collaboration with the Town of Randolph, the Randolph Conservation Commission, Vermont State University and various private landowners to help offer an extensive trail network to the Randolph community and beyond. The Ridgeline Outdoor Collective Trail Hub, located at 16 Pleasant St alongside with the Gear House bike shop, is a great place to start and end your adventure.

Join and volunteer to help maintain these trails.
ridgelineoutdoorcollective.org

- Park only at designated parking lots shown on map.
- Ride single file on all roads.
- Show your appreciation towards generous landowners (who allow public trail access) with a quick wave and smile when vehicles pass or out on the local roads and trails.

Are trails open?
Scan to check trail conditions!



HARVEYS
Plumbing and Excavating LLC

Lawson's
Finest Liquids
WATTSFIELD, VERMONT

GREEN MOUNTAIN BIKES
ROCHESTER VERMONT

THE STABLE INN

BIGTOWN GALLERY

NEW ENGLAND WOODCRAFT

VERMONT GLOVE

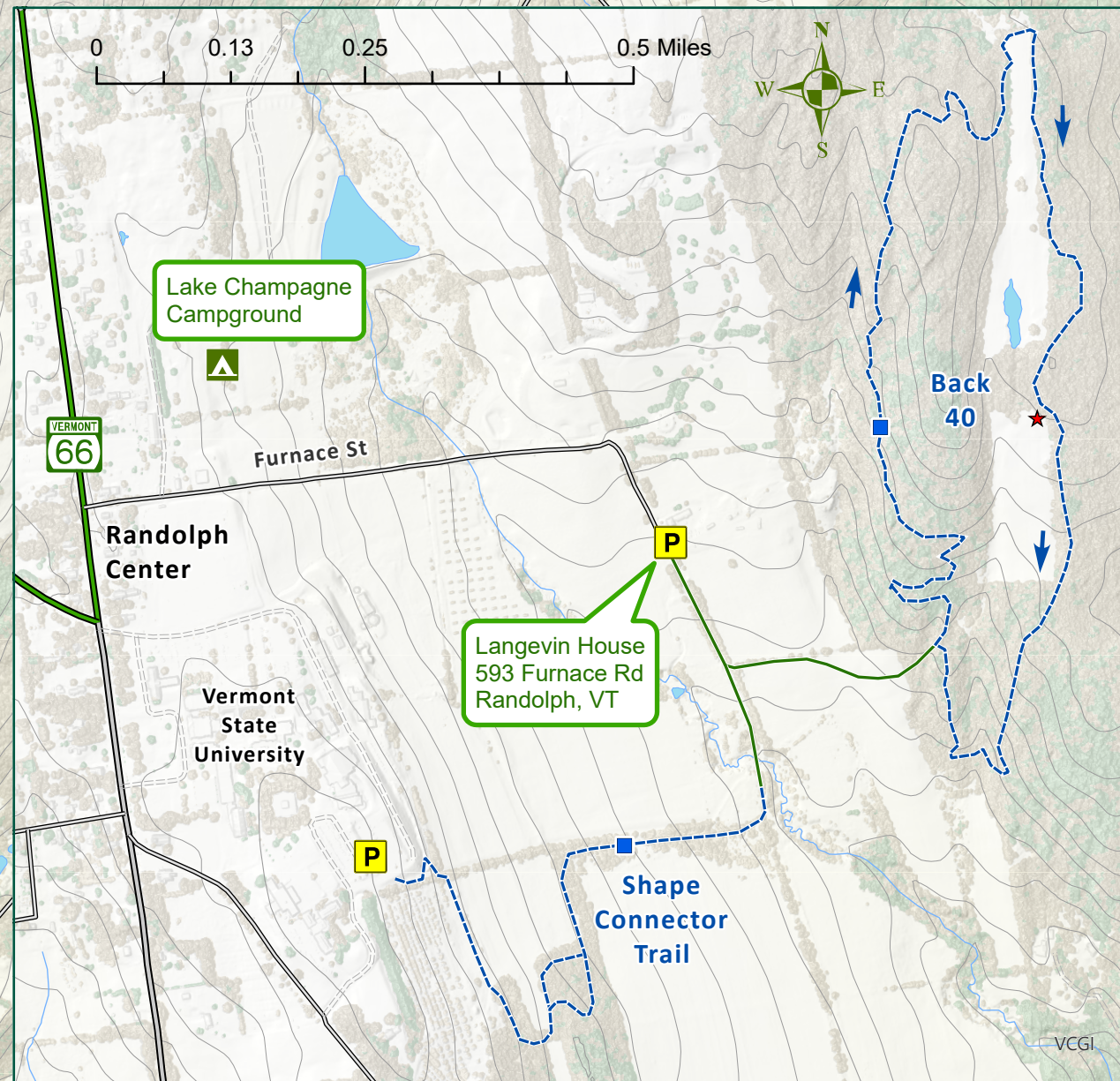
Edward Jones

CABOT CREAMERY

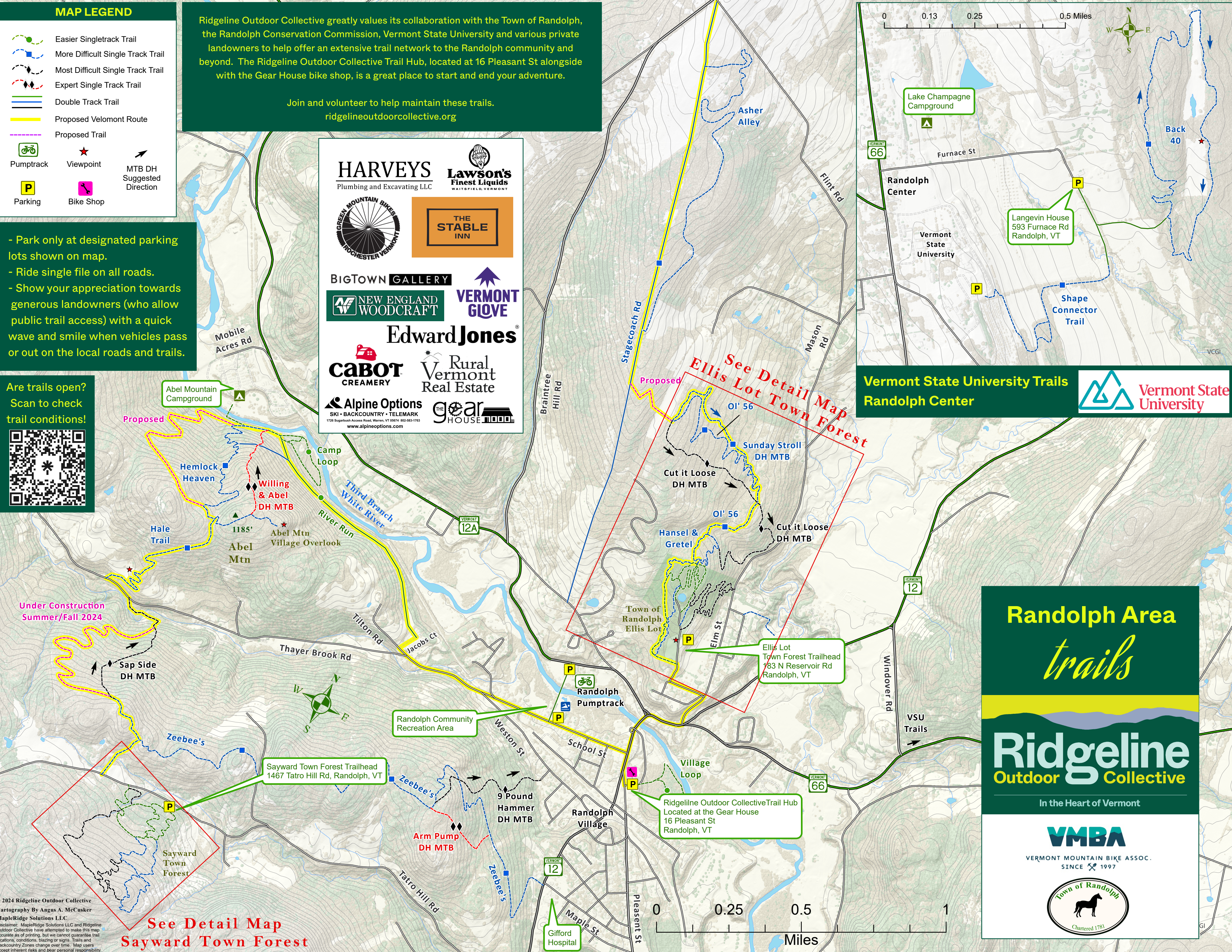
Rural Vermont Real Estate

Alpine Options
SKI • BACKCOUNTRY • TELEMARQUE
1726 Sugarbush Access Road, Warren, VT 05674 802-883-1763
www.alpineoptions.com

THE GEAR HOUSE



Vermont State University Trails Randolph Center



© 2024 Ridgeline Outdoor Collective
 Cartography By Angus A. McCusker
 MapleRidge Solutions LLC
 Disclaimer: MapleRidge Solutions LLC and Ridgeline Outdoor Collective have attempted to make this map accurate as of printing, but we cannot guarantee trail locations, conditions, blazing or signs. Trails and Backcountry Zones change over time. Map users accept inherent risks and bear personal responsibility.

See Detail Map Sayward Town Forest

Randolph Area
trails

Ridgeline
Outdoor Collective

In the Heart of Vermont

VERMONT MOUNTAIN BIKE ASSOC.
SINCE 1997

Town of Randolph
Chartered 1781

