

Rochester Valley trails

Ridgeline Outdoor Collective

In the Heart of Vermont



VERMONT MOUNTAIN BIKE ASSOC. SINCE 1997

Trails made possible thanks to the following partners and various private landowners.



HARVEYS
Plumbing and Excavating LLC

Lawson's
Finest Liquids
WAITSFIELD, VERMONT

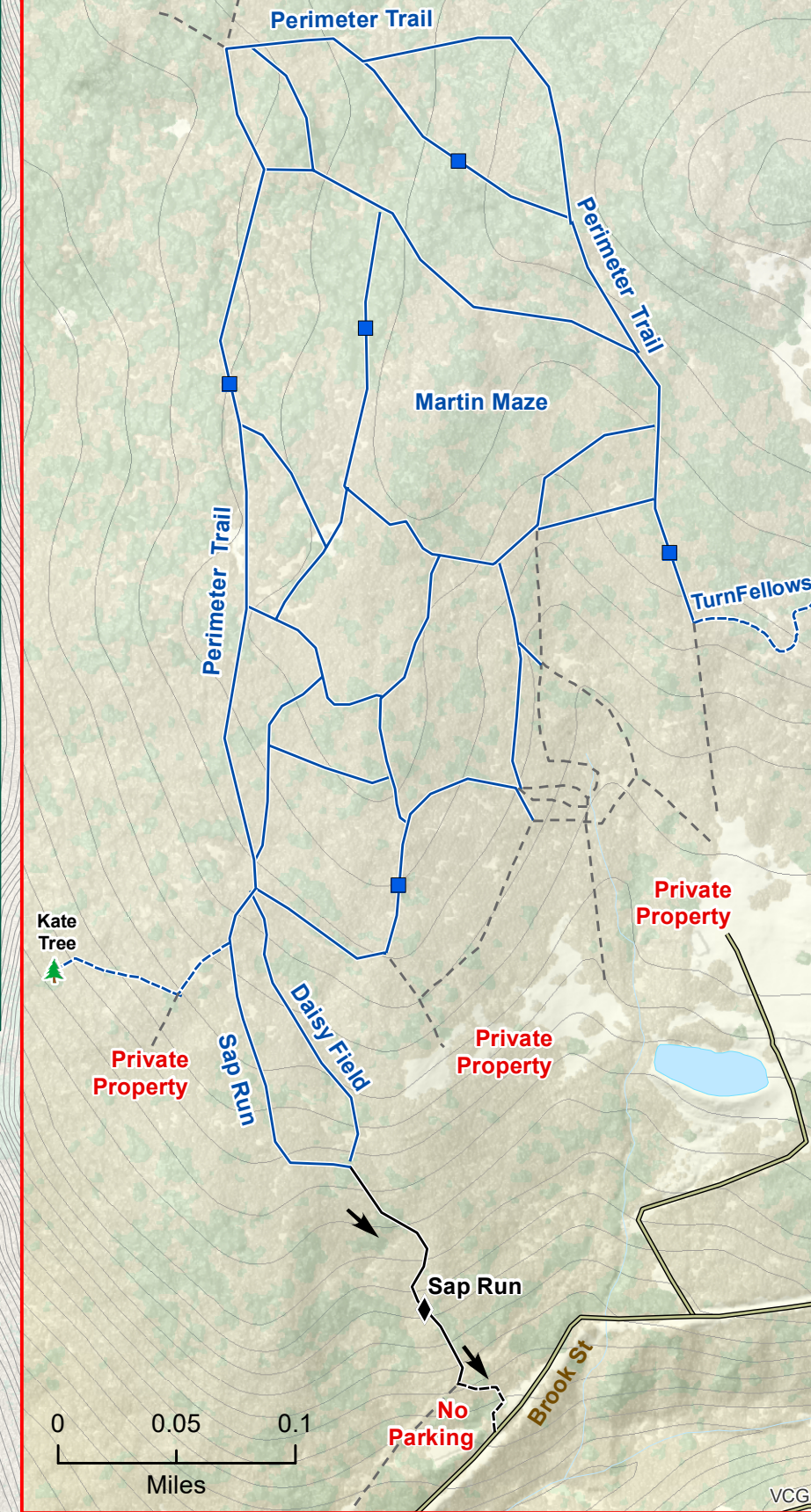


BIGTOWN GALLERY



Alpine Options
SKI • BACKCOUNTRY • TELEMAR
1726 Sugarbush Access Road, Warren, VT 05674 802-583-1763
www.alpineoptions.com

Are trails open?
Scan to check trail conditions!



MAP INSET VIEW

Join, donate and volunteer to help maintain these trails.
ridgelineoutdoorcollective.org

MAP LEGEND

- Easier Singletrack Trail
- More Difficult Single Track Trail
- Most Difficult Single Track Trail
- Expert Single Track Trail
- Double Track Trail
- Private Trail (Please Respect)
- Proposed Velomont Trail
- Pumptrack
- Parking
- aMTB Adaptive Friendly or Optimized Trail
- One Way Trail
- Viewpoint

© 2024 Ridgeline Outdoor Collective
Cartography By Angus A. McCusker
Ridgeline Outdoor Collective
Disclaimer: MapleRidge Solutions LLC and Ridgeline Outdoor Collective have attempted to make this map accurate as of printing, but we cannot guarantee trail locations, conditions, blazing or signs. Trails and Backcountry Zones change over time. Map users accept inherent risks and bear personal responsibility.

- Park only at designated parking lots shown on map.
- Ride single file on all roads.
- Show your appreciation towards generous landowners (who allow public trail access) with a quick wave and smile when vehicles pass or out on the local roads and trails.

